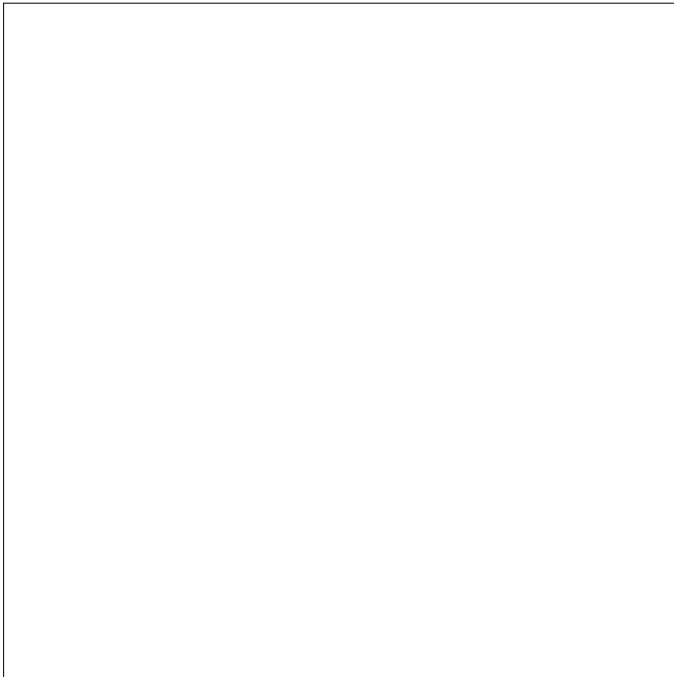


Fixed Setpoint Low-Pressure Switch - 250 psi Max

www.nasonptc.com

Part Number: SM-2C-16F/QC/GG



Interactive 3D graphic, click to activate and rotate.

Part No.	SM-2C-16F/QC/GG
Type	SM
Media Connection Modifier	Standard (Brass)
Media Connection	2 (1/8 - 27 NPT Male)
Circuit Form	C (SPDT)
Fixed Set Point (PSI)	16
Set Point Direction	F (Falling)
Electrical Connection	QC (1/4" Male Spade Quick Connect)
Wire Lengths Settings	N/A
Diaphragms	Standard (Buna Nitrile 366y)
Contacts	Standard (5 A @125/250 VAC / 5 A @30 VDC)
Other Options	GG (Internal Ground)
Note	-
Description	Fixed Setpoint Low-Pressure Switch - 250 psi Max Operating Pressure

After more than 60 years, Nason has become a proven leader in space-efficient hydraulic and pneumatic components.

Whether for the military, foodservice, healthcare or industrial market, Nason manufactures space-saving components for today's most demanding applications - hydraulic and pneumatic cylinders, switches and transducers that deliver maximum power and durability in a smaller footprint than ever.

Our products have set a new industry standard for quality, efficiency and flexibility - yet our biggest point of pride is our commitment to taking on new challenges for our customers. We strive to be a flexible partner - always innovating, always customizing solutions, big and small.

It's at the core of what we do, and we believe it's the best way to serve our customers.

8 7 6 5 4 3 2 1

F

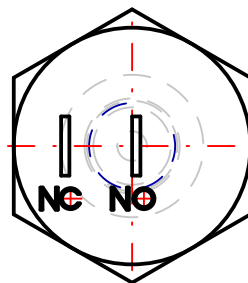
E

D

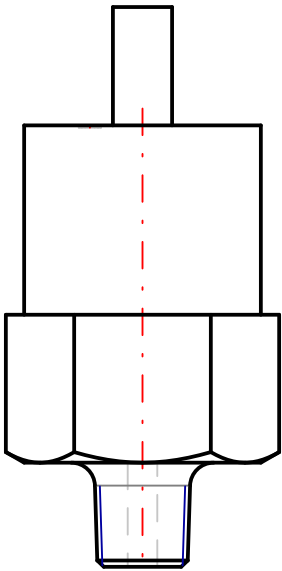
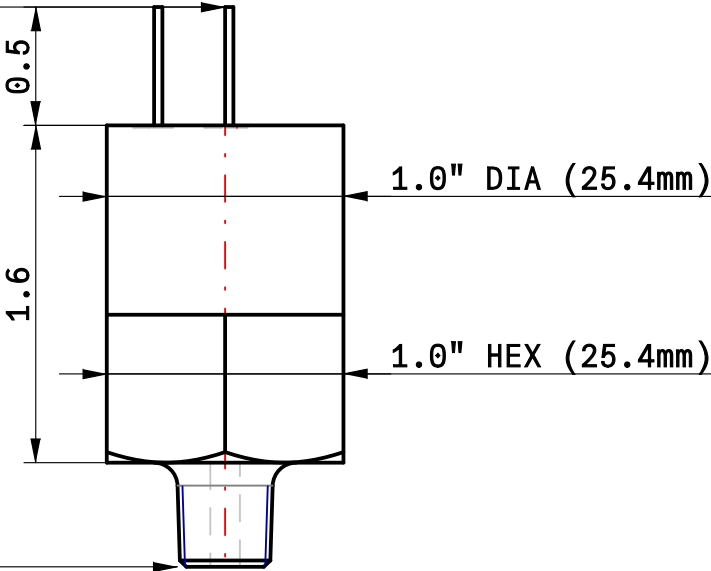
C

B

A



QC (1/4" Male Spade Quick Connect)



F

E

D

C

B

A

Disclaimer:
NASON has a continuous policy of product development and although the Company reserves the right to change specifications, it attempts to keep customers informed of any changes. This publication is for general information only and customers are requested to contact NASON for detailed information and advice on product suitability for specific applications. All products are sold subject to the company's Standard conditions of sale.

NASON

SM-2C-16F/QC/GG

8 7 6 5 4 3 2 1