



ENAPART



93 S Railroad Avenue Unit C
Bergenfield NJ 07621 USA
www.enapart.com
sales@enapart.com



Via del Canneto 35,
Borgosatollo, Brescia - Italia
www.enapart.it
vendite@enapart.it



Barbaros Mah. Ihlamur Bul. Aĝaoĝlu
My Newwork No:3/15 Ataşehir / İstanbul
www.enapart.net
satis@enapart.net



PRIVADA 10 B SUR #3908 COL.
ANZUREZ, C.P. 72530, PUEBLA, PUE
www.enapart.com.mx
sales@enapart.com.mx



Friedrich-Ebert-Anlage 36, 60325
Frankfurt am Main, Germany
www.enapart.de
anfrage@enapart.de



4 boulevard Carnot, 95400
villiers-le-bel, Paris, France
www.enapart.fr
sales@enapart.fr



65049, ОДЕСА, ВУЛИЦЯ ІВАНА
ФРАНКА, БУДИНОК 55, ПОВЕРХ 3
www.enapart.com.ua
sales@enapart.com.ua



MUNICIPIUL BUCUREȘTI, SECTOR 3,
B-DUL BASARABIA, NR.250, CORP P+5
www.enapart.ro
sales@enapart.ro



〒584-0023 大阪府富田林市若松町
東2丁目2番16号
www.enapart.co.jp
sales@enapart.co.jp



PLAZA NUESTRA SEÑORA DE LAS
NIEVES 12 ,LOCAL ,50012,ZARAGOZA
www.enapart.es
ventas@enapart.es



Складова база „Онгъл“, Склад А2, п.к.
4006, гр. Пловдив, България
www.enapart.bg
sales@enapart.bg



3 Austin Mews, High Street, Hemel
Hempstead, HP1 3AF , United Kingdom
www.enapart.co.uk
sales@enapart.co.uk

CVM-C5

Basic & affordable
multifunction Multimeter

The new generation of CVM



CVM-C5

Basic & affordable multifunction Multimeter (96 x 96 mm)

Suitable for Low Voltage installations

Measures in Single-phase, Bi-phase (2-3 wires)
and Three-phase (3 or 4 wires) networks

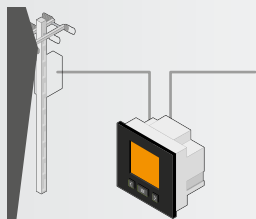
4 Quadrant measurement

Measurements taken with /5 A or /1 A transformers or
the efficient transformers of **CIRCUTOR's MC** range

1 built-in digital output (S0 Interface)

1 built-in digital inputs (tariff selection) or load type

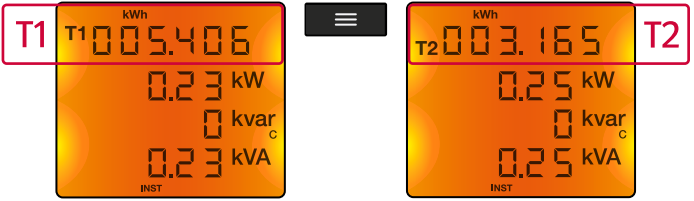
Maximum, Minimum values and Maximum demand.



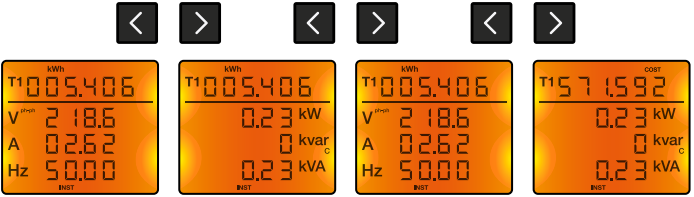
Get the **Energy consumption or generation from two different sources** (Main network/generator) and see it over the screen.

Screen Data System

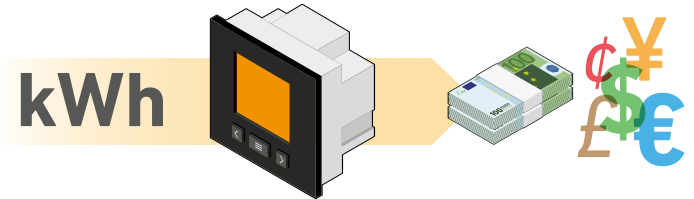
Quick monitoring parameters with a single button.



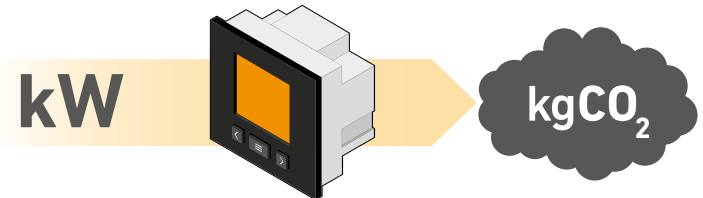
Shows clearly the **basic parameters** of an electrical installation.



Displays **cost of energy consumption** by configuring the kWh cost ratio.



Displays **KgCO₂ indicator** in consumption/generation according to the energy nature, using the ratio established of the energy mix in the country.



Technical features

| | | |
|---------------------|---|--|
| Power-Supply | Voltage supply | 85-265 V _{ac} / 50...60 Hz 95-300 V _{dc} |
| Measure | Voltage | 300 V _{ac ph-n} / 520 V _{ac ph-ph} 50...60 Hz |
| | Current | ... /5 A & /1 A MC: ... /250 mA |
| | Sampling rate | 64 samples/cycle |
| Accuracy | V, I, Power | 0,5% |
| | Energy | 1% |
| Output | 1 built-in digital output | S0 interface Configurable up to 1000 impulses by kWh, kVarh, etc. (24 V _{dc} max, 50 mA, 5 imp/s, Max T _{on} /T _{off} (configurable)) |
| Input | 1 built-in digital input | Tariff selection NPN, optoinsulated |
| Safety | Protection Degree | Frontal protection: IP 51 Terminals: IP 20 |
| | | Class III category / EN 61010 Double-insulated electric shock protection class II |
| Standards | IEC 664, VDE 0110, UL 94, IEC 801, IEC 348, IEC 571-1, EN 61000-6-3, EN 61000-6-1, EN 61010-1, CE, according to UL | |

References

| Type | Code | Current input | Input | Output |
|---------------------|---------------|-------------------|-------|--------|
| CVM-C5-IC | M55853 | ... /5 A and /1 A | 1 | 1 |
| CVM-C5-MC-IC | M55873 | /250 mA | 1 | 1 |

www.circuitor.com

CIRCUTOR, SA - Vial Sant Jordi, s/n
08232 Viladecavalls (Barcelona) Spain
Tel. (+34) 93 745 29 00
central@circuitor.es



@circuitor



youtube.com/circuitoroficial



circuitor

